

APRIL 2026

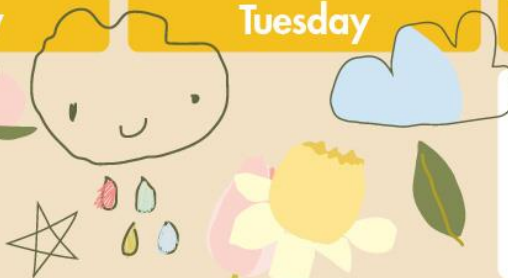
Monday

Tuesday

Wednesday

Thursday

Friday



NO SCHOOL TODAY!
SEE YOU TOMORROW!

WG Pizza Slice **23g**
Mixed Green Salad **4g**
Apple **18g**

Cheeseburger On a WG Bun **26g**
Vegetarian Baked Beans **30g**
Applesauce **17g**

Chicken Burrito with WG Tortilla **25g**
Corn **19g**
Mixed Fruit Cup **26g**

Chicken Drumstick **6g**
WG Roll **12g**
Spinach Salad **4g**
Fruit Cup **22g**

Swedish Meatballs **16g**
WG Roll **17g**
Broccoli **8g**
Fruit Cup **22g**

WG Pizza Slice **23g**
Mixed Green Salad **4g**
Apple **18g**

Chicken Patty on a WG Bun **13g**
Vegetarian Baked Beans **16g**
Applesauce **30g**
17g

Chicken Burrito with WG Tortilla **25g**
Corn **19g**
Mixed Fruit Cup **26g**

French Toast **28g**
Turkey Bacon OR Cheese Stick **1g**
Hashbrowns **17g**
Mixed Fruit Cup **26g**

Hot Dog on WG Bun **3g**
Vegetarian Baked Beans **25g**
Applesauce **30g**
17g

WG Pizza Slice **23g**
Mixed Green Salad **4g**
Apple **18g**

Chicken Nuggets **24g**
WG Roll **12g**
Broccoli **8g**
Applesauce **17g**

Turkey & Cheese Sub In a WG Sub Bun **24g**
WG Chips **27g**
Vegetarian Baked Beans **30g**
Banana **27g**

Teriyaki Chicken Stir-Fry **20g**
Caribbean Vegetable **3g**
Mixed Fruit Cup **26g**
Fortune Cookie **16g**

Chicken Alfredo **32g**
WG Roll **12g**
Broccoli **8g**
Pear **25g**

WG Pizza Slice **23g**
Mixed Green Salad **4g**
Apple **18g**
WG Cookie **18g**

Chicken Patty on a WG Bun **13g**
Vegetarian Baked Beans **16g**
Applesauce **30g**
17g

Chicken Gyro on a WG Pita **35g**
Fries **33g**
Mixed Fruit Cup **26g**



Menu reflects: Carb counts listed in **ORANGE**. **HALAL** or **KOSHER** only

Fresh Carrots are offered **DAILY**

Milk is offered with each meal: 1% White Milk **12g** OR Fat Free Chocolate **24g**

USDA is an equal opportunity provider, employer, and lender.

Menu is subject to change based on food availability or unforeseen school closures.

Fig's Café & Catering Services

Contact: Melissa Bryant 614.747.0196